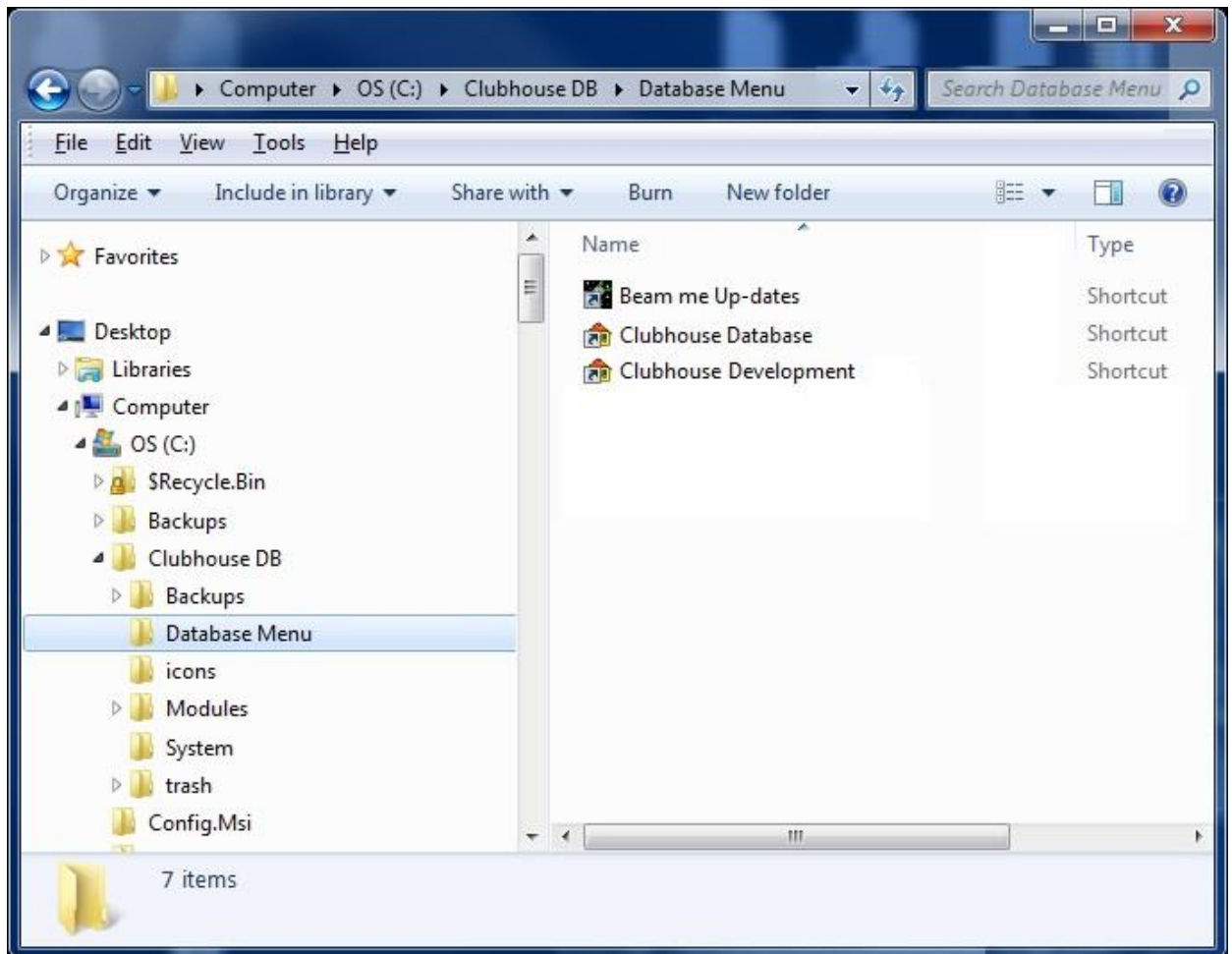


Where can I find the Appilistic Database shortcut ?

When the database is installed, it is normal to install the Appilistic Database shortcut on the All Users desktop. If the shortcut is no longer available on your desktop, there are two other ways to obtain it:

1) Find it where the database is installed on the computer you are using.

- a. This is called the Local Path, and it is usually:
 - i. C:\Clubhouse DB\;
 - ii. C:\Appilistic\;
 - iii. Or, in a similarly named folder located within “My Documents”;
- b. Right click on the “Start” button or orb and select “File Explorer”, “Open Windows Explorer” or “Explore” to open File Explorer.
- c. Using File Explorer, find and open the “Database Menu” folder, found within the Local Path, as shown in the illustration below.



- d. Copy and paste (DO NOT DRAG or MOVE) the “Clubhouse Database” or “Appilistic Database” shortcut to the desktop.

NOTES:

- i. If you don't leave the original where you found it, it won't be there the next time you need it;
- ii. On Windows XP and earlier operating systems, the All Users desktop is located at "C:\Documents and Settings\All Users\Desktop\";
- iii. On all machines running a newer version of the Windows operating system, the All Users desktop is located at "C:\Users\Public\Desktop\";

2) Contact Appilistic for instructions on how to create a new shortcut.